

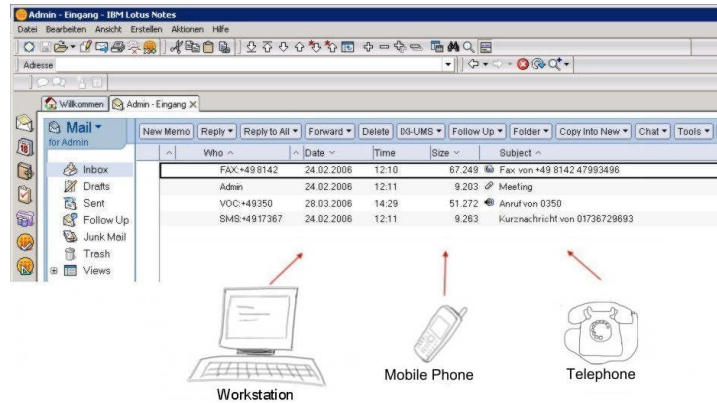


IXI-UMS Domino Connector

Unified Messaging

for IBM Lotus Domino 8.0x, 7.0x, 6.5x, 6.0x, 5.0x

- Fax
- Voice
- SMS
- Mobile/Remote Enquiry
- Mobile Notification
- Client Tools for Notes Client, fax printer driver, Notes Add-In (Microsoft Windows Terminal Server and CITRIX XenApp / Presentation Server / MetaFrame compatible)



Preconditions

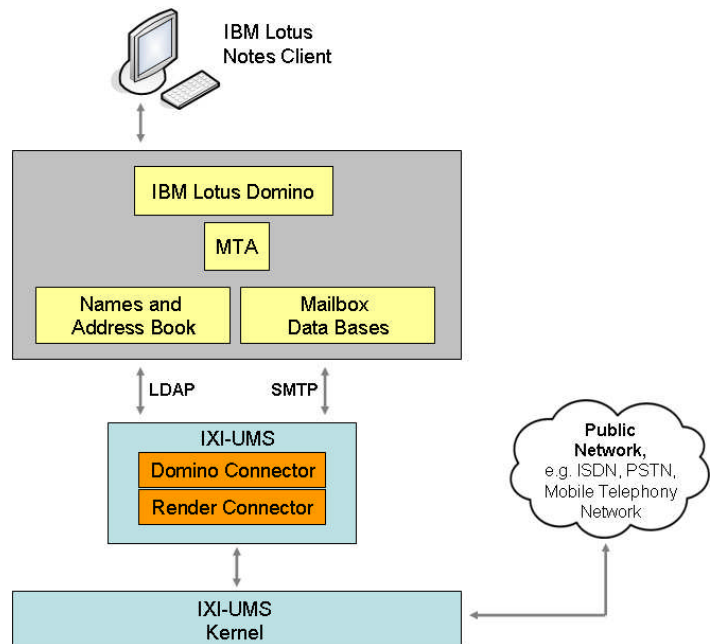
- Windows 2003 Server, Windows XP Prof
- Internet Explorer 5.0 or higher
- IXI-UMS Kernel 5.5 with installed IXI-Framework
- Domino 8.0x, 7.0x, 6.5x, 6.0x, 5.0x

Installation / Administration

- Installation as Windows Service
- VMware compatible (GSX Server, ESX Server)
- Connector-administration under MMC
- User maintenance directly in Names and Address Book
- Installation with or without extension of Names and Address Book
- Single Store: direct access to Names and Address Book and mailbox data bases (no data replication necessary)
- IXI-UMS client installation not necessary (Notes as client)
- Use of the global and personal address books
- IXI-UMS Kernel and IXI-UMS Connector can be installed on one PC or on separate PC's
- Support of distributed messaging architectures with several Domino servers
- Least Cost Routing via distributed servers
- Combination with further IXI-UMS Connectors possible (e.g. for SAP systems, Microsoft Dynamics NAV (Navision))

UMS Connection to PBX's

The unified messaging solution works with conventional PBX's as well as with IP-based PBX's (e.g. Cisco CallManager, innovaphone PBX)



Further Possibilities

IXI-Call connection (CTI with Contact Popup with incoming calls, easy dialing, status monitor, MetaDirectory)